

Art Class

with
Ms. Jody Chandler

High School

This information can also be found on my website:
<https://sites.google.com/paparts.net/chandjo/home>

Bring to every class:

9x12, Mixed Media

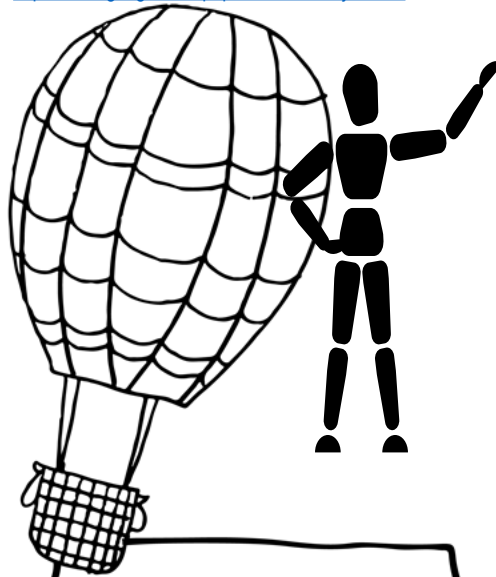
- ✓ Sketchbook and/or drawing tablet
- ✓ Pencil
- ✓ Sharpener
- ✓ Eraser (sep. from one on pencil)
- ✓ Liner pen (skinny type sharpie pen)
- ✓ Positive attitude

60% Projects

Depending on the area of study, projects will typically be given every 2 weeks.

40% Classwork

Will be done in student's sketchbook. It will be in the form of "daily art prompts"



Grading

Grades will be entered into Power School on a weekly basis for student/parent/ guardian review. Artwork will be assessed per provided rubric. Assignments be self-assessed as well as teacher assessed.

60% Projects + 40% Classwork

= Total Grade

Class Policies

Homework:

- I do not generally give homework.
- At times, a review may be assigned.
- If a student does work outside of the classroom, that is fine, but not expected.

Absent:

- If you are absent, it is your responsibility to contact me to get your make-up work in a timely manner.

Late Work

- I will accept late work anytime, no penalty or loss of points.

Regrade

- You have the option to redo anything, anytime, for a higher grade.

*The earth
without art
is just eh..*

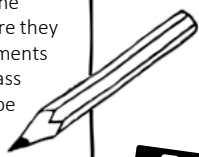
Hall Passes

Each student may use restroom as needed and may leave the classroom for emergencies only.



Arts Events Absences

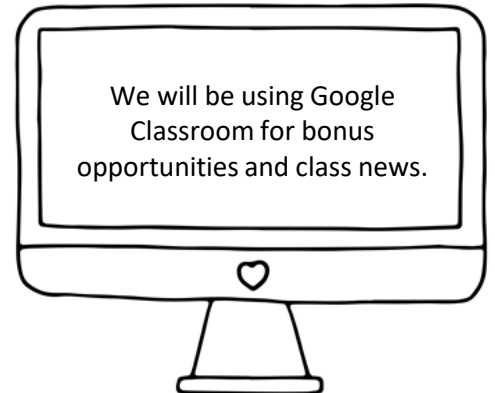
Students will occasionally miss class due to arts performance and events. Students are responsible to make-up any missed quizzes, tests, or classwork, and to obtain any notes or information given in class. Homework and papers are still due on the assigned day- sports players must leave the assignment in my box before they leave for the game. Assignments turned in the day after a class missed due to a game will be counted as late.



Tardies

Being on time is a class expectation. If a student is tardy, they are expected to come in quietly and join the class. If it happens on a regular basis, parents/guardians will be contacted. Any work or instruction missed because of a tardy must be made up.

We will be using Google Classroom for bonus opportunities and class news.



How can I earn an A on a project? Art Rubric:

100-90 points= Exemplary – Followed ALL directions; EXTREME effort; Contrast shown; COMPLETE; Neat; Balanced.

89-80 points = Proficient- "Exemplary" with minor infractions.

79-70 points = Progressing - Some of the items in "Exemplary" are not evident.

69-60 points = Needs Improvement – More than "some" of the items in "Exemplary" are not evident.

59-below= Not Meeting Standards- Incomplete, minimal effort; major infractions from "Exemplary".

Have a question? Contact me anytime.
I look forward to a great year!



jchandler@paparts.org, jchandler@paparts.net
Google Voice #505-738-3541